

REBEL CACTUS

START GUIDE REBEL CACTUS PLAY



Hi! Thanks for choosing Rebel Cactus!

We look forward to making many new memories and have great adventures together!

With Rebel Cactus you discover your world playfully!

DISCOVER YOUR WORLD

FOR MORE INFORMATION CHECK OUT
FAQ'S ON WWW.REBELCACTUS.COM



STEP BY STEP

IN THIS START GUIDE WE WILL EXPLAIN STEP-BY-STEP HOW TO QUICKLY AND EASILY PREPARE THE REBEL CACTUS SMARTWATCH FOR USE.

STEP 1.

Make sure the smartwatch battery is fully charged.

STEP 2.

Grab the SIM card. This must be a nano sized SIM card. The image shows the size of the nano SIM card. Press the nano format out of the card.



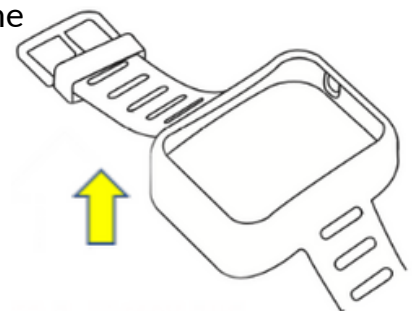
STEP 3.

Insert the nano SIM card into the smartwatch as shown in the image on the right. Pay attention! Place the SIM card in the smartwatch with the correct side, otherwise, the smartwatch will indicate an error.



STEP 4.

Is the SIM card in the smartwatch? Now place the smartwatch in the watch strap. Click the smartwatch from bottom to top in the strap and make sure the power button is on the right side.



DISCOVER
YOUR WORLD

FOR MORE INFORMATION CHECK OUT
FAQ'S ON WWW.REBELCACTUS.COM

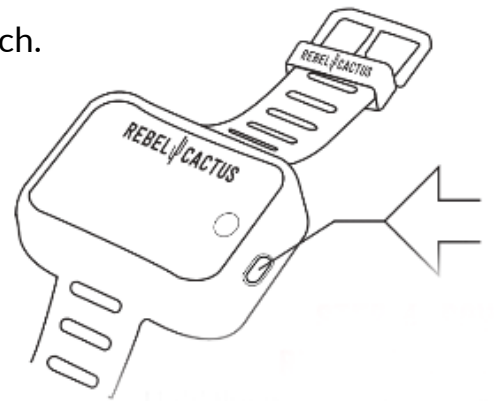




STEP 5.

Press the power button on the side and turn on the smartwatch.
See the image below right.

*Turn off the smartwatch via 'settings', then 'shutdown' or via the parent app, see step 19.



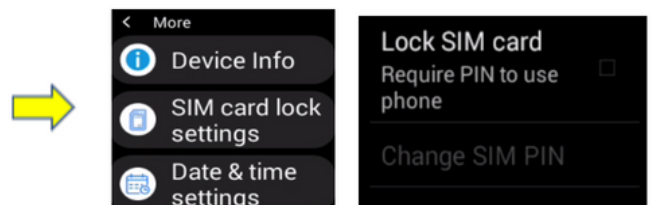
STEP 6.

Unlock the nano SIM card with the supplied pin. This can be found on the pass where you pushed out the SIM card as shown below.
The pin code of KPN and Vodafone is default '0000'.



STEP 7.

On the smartwatch, go to 'settings', then to 'more', then to 'SIM card lock setting', 'unmark lock simcard' and re-enter the pin code.



DISCOVER
YOUR WORLD

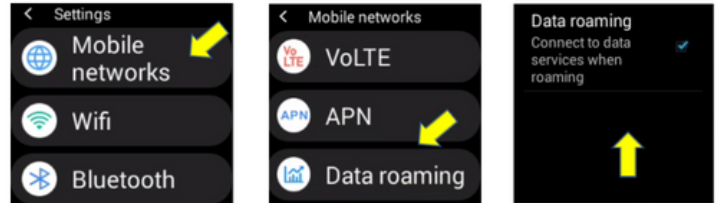
FOR MORE INFORMATION CHECK OUT
FAQ'S ON WWW.REBELCACTUS.COM





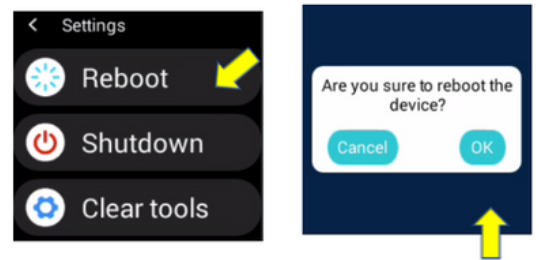
STEP 8.

Now go to 'settings' again, then to 'mobile networks', then to data roaming. In 'data roaming', tick 'data roaming'.



STEP 9.

Go to 'settings' again and press on 'reboot'. The watch will now reboot.



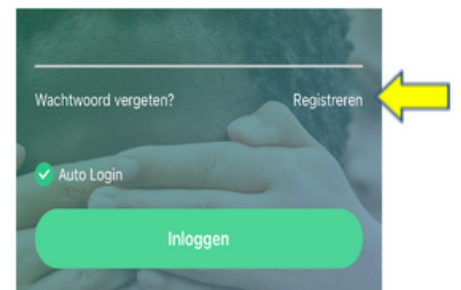
STEP 10.

Download the Rebel Cactus Tracker app on the parents' smartphones. Do this with your smartphone to scan this QR code. You can also look up the app in the App Store/Google Play Store or by the QR code on scan the smartwatch, press 'app code'.



STEP 11.

Once the Rebel Cactus Tracker app has been downloaded, open the app. As a parent, you must first register by creating an account. Click on 'Register'.



DISCOVER YOUR WORLD

FOR MORE INFORMATION CHECK OUT
FAQ'S ON WWW.REBELCACTUS.COM





STEP 12.

Now enter your email address, the code, and your password.

Agree to the user agreement and confirm your registration.

Pay attention! Your password must be at least 8 to 16 letters & numbers exist. Special characters are not allowed.

STEP 13.

Once you have confirmed your registration, you will enter the page 'add new smartwatch'. At 'enter/scan QR-code, scan the registration code on the smartwatch. You can find this under QR-code.

Pay attention! Choose 'registration code' and not 'app code'.

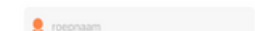
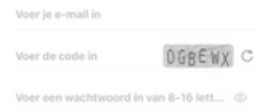
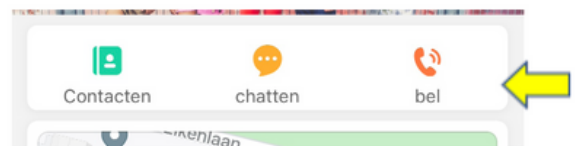
Enter the parent's name, choose your relationship with the child and click on 'OK'.



STEP 14.

Now enter your child's telephone number in the 'Call' field. This number can be found on the SIM card. Always add the country code, so for the Netherlands, +31 6...

When connecting with the app, make sure that you are in a room where you have a good range.



DISCOVER
YOUR WORLD

FOR MORE INFORMATION CHECK OUT
FAQ'S ON WWW.REBELCACTUS.COM





STEP 15.

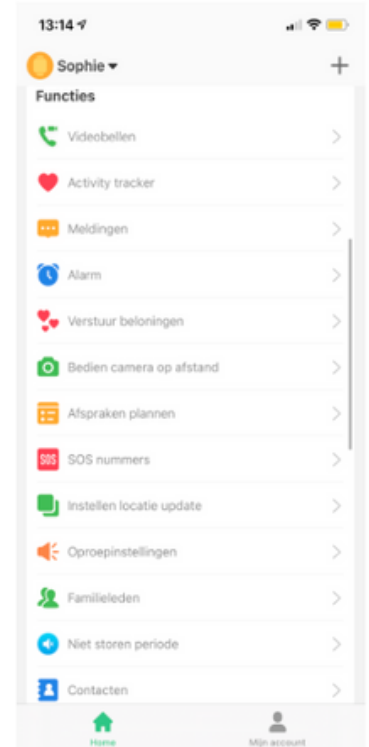
Now enter your own phone number and that of other contacts such as grandpa/grandma, brother/sister. This can be done under 'contacts'.

STEP 16.

In functions, you set the things that are important to you. For example 'SOS numbers', more contacts such as grandpa, grandma, friends, uncle, and aunt, who can call the smartwatch. It is important as a parent to change the watch password. Do this after you have paired the watch.

Send an SMS to the watch from your smartphone with the following code: pw,(old ww),pw,(new ww),#
So for example: pw,123456,pw,453454,#

Pay attention! This should always be a 6-digit code, such as 123456. If done correctly you will receive a message saying 'set up new PW was successful'. Remember the new password!



STEP 17.

Now go to 'settings' on the smartwatch, go to 'wifi', and set the wifi code here. Tip! If your child has no data on the smartwatch, you can connect to the hotspot on your parent's phone while on the go.



DISCOVER
YOUR WORLD

FOR MORE INFORMATION CHECK OUT
FAQ'S ON WWW.REBELCACTUS.COM





STEP 18.

Now go to the apps (Spotify etc.) that your child can use and log in here.

Your child(ren) can also play fun games.

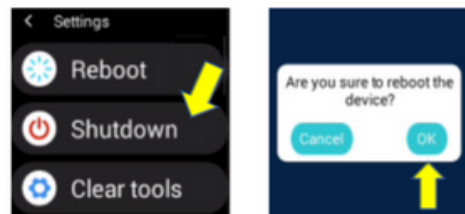
*The software is periodically updated with new games and/or apps.

*Disclaimer: Parents remain responsible for the use of the apps by their children.

STEP 19.

Make sure the smartwatch is turned off before you start charging it (this is not necessary, you can also charge the smartwatch when it is on, but off is the fastest way). You can turn off the smartwatch in two ways:

1. Via the RC Tracker app, go to 'turn off smartwatch'.
2. On the smartwatch. Go to Settings and press 'shutdown' and then 'OK' and the smartwatch turns off.



DISCOVER
YOUR WORLD

FOR MORE INFORMATION CHECK OUT
FAQ'S ON WWW.REBELCACTUS.COM





Now the smartwatch is ready for use. Let them take off to the football field or playground with their friends. With the kids smartwatch from Rebel Cactus they are ready to discover the world!

MORE INFORMATION OR USEFUL TIPS ABOUT THE SMARTWATCH? OR DO YOU JUST HAVE A QUESTION? GO TO WWW.REBELCACTUS.COM.
WE ARE ALSO ALWAYS READY FOR YOU AT CUSTOMERSUPPORT@REBELCACTUS.COM.

YOU CAN ALSO FOLLOW US ON SOCIAL MEDIA!



[@REBELCACTUS](https://www.facebook.com/REBELCACTUS)



[@REBEL_CACTUS](https://www.instagram.com/REBEL_CACTUS)



[@REBEL_CACTUS](https://www.tiktok.com/@REBEL_CACTUS)



DISCOVER
YOUR WORLD

FOR MORE INFORMATION CHECK OUT
FAQ'S ON WWW.REBELCACTUS.COM

